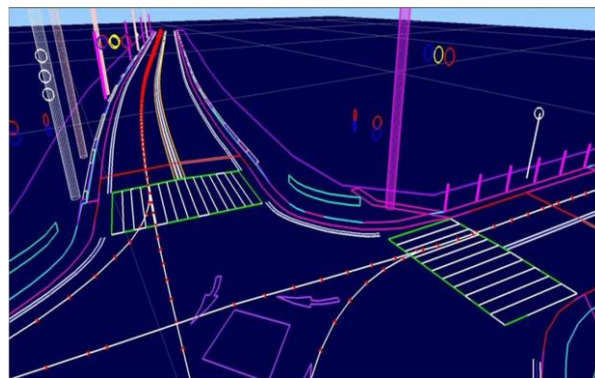


PRESS RELEASE

**Mitsubishi Electric Launches Europe-wide Mobile Mapping and High Precision GNSS Positioning Business from Germany**

- *Newly established business division will contribute to accelerated adaption of autonomous driving systems in Europe*
- *Will introduce technology enabling high-definition 3D mapping and highly precise positioning for centimeter-level autonomous driving systems*
- *Company exhibits at INTERGEO in Stuttgart and at Mobility Electronics Suppliers Expo (MES Expo) in Berlin.*

**Ratingen, August 29, 2019** - Mitsubishi Electric Europe B.V. has established the High Precision Positioning Systems Division at its German Branch headquarters in Ratingen, Germany. The new division offers key technologies to German and European customers to accelerate the introduction of centimeter-level autonomous driving and safe driving assistance. These are the Mobile Mapping System (MMS) and the high-precision AQLOC positioning receiver with centimeter-level accuracy for applications in road and utility vehicles, harbors and drones as well as the agricultural sector.



Example of a high-definition 3D map  
(image courtesy of AISAN TECHNOLOGY Co., Ltd.)

AQLOC will be compatible with GNSS services and positioning data augmentation services by Sapcorda, a joint-venture by Mitsubishi Electric, Bosch, Geo++ and u-blox. MMS uses car-mounted GNSS antennas, laser scanners and cameras to gather 3D positioning data for road assets with high-level accuracy, creating the comprehensive, high-definition 3D maps needed to support autonomous driving.

Mitsubishi Electric Corporation is making mobile mapping and high-precision positioning systems available in Europe, North America, Asia and Oceania, where the demand for highly accurate, precise and efficient field surveys and infrastructure inspections is expected to grow.



**Kenji Nakakuki**

"We use our experience in the development of the Japanese Quasi-Zenith Satellite System (QZSS) and the Centimeter-Level Augmentation Service (CLAS), which already offer centimeter-level positioning data in Japan. In addition, Mitsubishi Electric invested in "Dynamic Map Platform Co., Ltd.", a 3D mapping project in Japan that has acquired the US company Ushr in February 2019 and thus made an important contribution to the infrastructure for autonomous driving. With our technological know-how and experience, we want to pave the way for precise and safe autonomous driving in Europe", explains Kenji Nakakuki, Division Manager, High Precision Positioning Systems, Mitsubishi Electric Europe B.V.

MMS and AQLOC equipment will be manufactured by the company's parent company in Japan, Mitsubishi Electric Corporation, a leading manufacturer contributing to space research and development since the 1960s, having participated in the production of more than 500 Japanese and international satellites as the prime contractor or major subcontractor.

"We are happy to add this new business area to our wide-ranging mobility solution portfolio, which already includes automotive equipment, power devices and railway systems. The High Precision Positioning Systems Division rounds out our mobility sector and will offer German and European customers essential technologies for highly precise autonomous driving systems in a variety of scenarios", says Andreas Wagner, President of the German Branch of Mitsubishi Electric Europe B.V.



**Andreas Wagner**

The company will showcase the portfolio of the business unit with hands-on exhibits at the upcoming INTERGEO trade show in Stuttgart, Germany from 17 to 19 September 2019 and at the newly established Mobility Electronics Suppliers Expo (MES Expo) in Berlin, Germany from November 5 to 7, 2019.



Mobile Mapping System (MMS)



High-accuracy positioning receiver AQLOC

### **About Mitsubishi Electric**

With nearly 100 years of experience in providing reliable, high-quality products, Mitsubishi Electric Corporation is a recognized world leader in the manufacture, marketing and sales of electrical and electronic equipment used in information processing and communications, space development and satellite communications, consumer electronics, industrial technology, energy, mobility and building technology, as well as heating, cooling and air-conditioning technology.

Embracing the spirit of its corporate statement, Changes for the Better, and its environmental statement, Eco Changes, Mitsubishi Electric endeavours to be a global, leading green company, enriching society with technology.

With around 145,800 employees the company recorded consolidated group sales of 40.7 billion US Dollar\* in the fiscal year ended March 31, 2019.

Our sales offices, research & development centres and manufacturing plants are located in over 30 countries.

Since 1978, Mitsubishi Electric is represented in Germany as a branch of Mitsubishi Electric Europe. Mitsubishi Electric Europe is a wholly owned subsidiary of Mitsubishi Electric Corporation in Tokyo.

*\* At an exchange rate of 111 yen to the US dollar, the rate given by the Tokyo Foreign Exchange Market on March 31, 2019*

Further information:

<http://www.MitsubishiElectric.de>

<http://www.MitsubishiElectric.com>

**Press contact:**

Niels Meinke

Corporate Communications  
Mitsubishi Electric Europe B.V.  
German Branch, Mitsubishi-Electric-Platz 1, 40882 Ratingen

Niels.Meinke@meg.mee.com  
Tel.: +49-(0)2102-486 9922